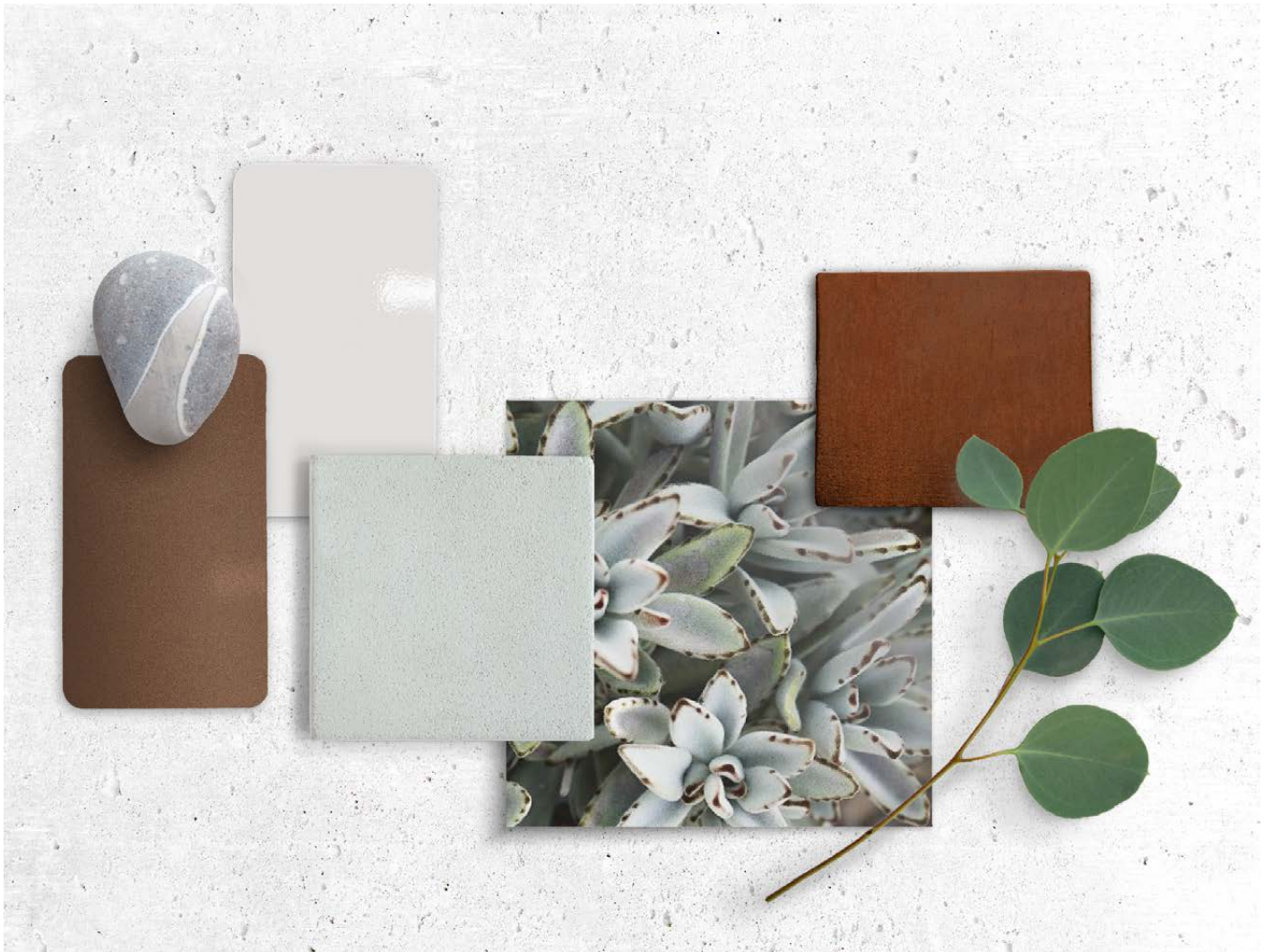


# Materials & Finishes

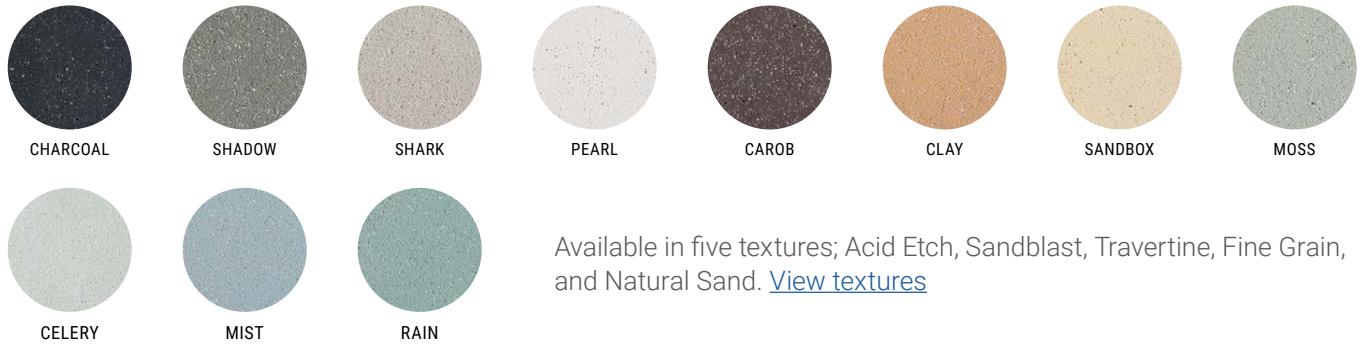


GFRC LIGHTWEIGHT CONCRETE  
FRP FIBERGLASS  
POWDER-COATED ALUMINUM & STEEL  
GREENSCREEN TRELLIS  
WEATHERING STEEL  
WOOD VARIETIES  
RECYCLED PLASTIC LUMBER

This document is intended as an overview of our materials & finishes. Images of samples are provided as a guide. Physical samples and swatch books can be ordered on our website at [tournesol.com/finishes](https://tournesol.com/finishes).

For more information about our materials, see [tournesol.com/care](https://tournesol.com/care).

## GFR - Lightweight Concrete



Available in five textures; Acid Etch, Sandblast, Travertine, Fine Grain, and Natural Sand. [View textures](#)

## FRP - Fiberglass



Available in three textures; Smooth, Rough Stucco, and Orange Peel. [View textures](#)

### GFR Lightweight Concrete

Our GFR products are cast in our plant in Juarez, Mexico. GFR is glass fiber reinforced concrete. It's made by combining a mixture of fine sand, cement, polymer, water, other admixtures, and alkali-resistant glass fibers.

### FRP Fiberglass

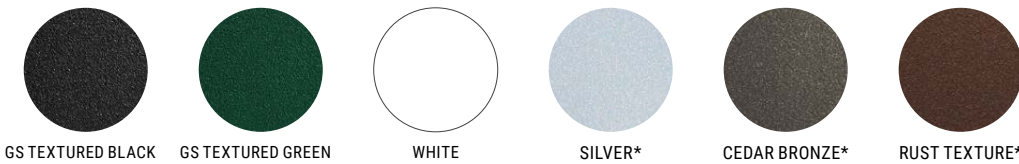
Our commercial-grade FRP planters are highly durable, last longer than plastic, and will endure in most winter climates. Our labor-intensive process results in a uniform, consistent quality product. Available in three textures; Smooth, Rough Stucco, and Orange Peel.

## Powder-Coat Finishes - Aluminum & Steel [View details](#)



\*Our standard powder-coat colors come in semi-gloss, except Pitch Satin, Rust Texture, and Metallic colors.

## Greenscreen Trellis [View details](#)



## Weathering Steel [View details](#)



Our weathering steel products are A588 and A606 grade, shipped un-weathered or pre-weathered.

## Wood [View details](#)



## Recycled Plastic [View details](#)





## Glass Fiber Reinforced Concrete - GFRC

We cast GFRC products in our plant in Juarez, Mexico. GFRC is glass fiber reinforced concrete and is made by combining a mixture of lightfast pigments, fine sand, cement, polymer, water, and alkali-resistant glass fibers.

Our GFRC products are available in five textures and a palette of colors. See all of these textures and colors on our Samples & Finishes page.

The glass fibers used in GFRC help give this unique compound its strength. Alkali-resistant fibers act as the principal tensile load-carrying member, while the polymer and concrete matrix bind the threads together and helps transfer loads from one fiber to another. Without fibers, GFRC would not possess its strength and would be more prone to breakage and cracking.

GFRC products have the appearance of poured concrete but are lighter and stronger. Thin layers of materials are hand-applied to mold interiors with added strength from

layers of fiberglass. Our production process is different for each of our GFRC textures. All GFRC products include binders to resist cracking and efflorescence.

### **Interior Sealant**

Once cast, our planters have an interior sealant added as a water-resistant, damp-proofing layer to prevent most efflorescence and cracking.

### **Optional Waterproofing**

TourneSeal, an optional waterproofing, can be applied to the planter interior. Once coated, we test for watertightness and recommend our customers do an additional test after installation before filling.

### **Exterior Sealant**

Concrete is a porous surface that absorbs moisture and minerals, which can cause changes to the surface appearance. To preserve original appearance, our GFRC is sealed with clear concrete sealer.

# GFRC - Lightweight Concrete



CHARCOAL  
ACID ETCH



CHARCOAL  
SANDBLAST



CHARCOAL  
NATURAL SAND



CHARCOAL  
FINE GRAIN



CHARCOAL  
TRAVERTINE



SHADOW  
ACID ETCH



SHADOW  
SANDBLAST



SHADOW  
NATURAL SAND



SHADOW  
FINE GRAIN



SHADOW  
TRAVERTINE



SHARK  
ACID ETCH



SHARK  
SANDBLAST



SHARK  
NATURAL SAND



SHARK  
FINE GRAIN



SHARK  
TRAVERTINE



PEARL  
ACID ETCH



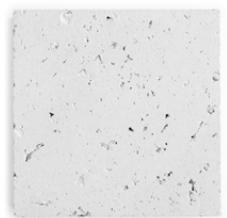
PEARL  
SANDBLAST



PEARL  
NATURAL SAND



PEARL  
FINE GRAIN



PEARL  
TRAVERTINE

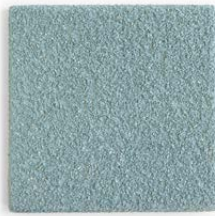
# GFRC - Lightweight Concrete



MIST  
ACID ETCH



MIST  
SANDBLAST



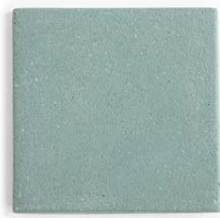
MIST  
NATURAL SAND



MIST  
FINE GRAIN



MIST  
TRAVERTINE



RAIN  
ACID ETCH



RAIN  
SANDBLAST



RAIN  
NATURAL SAND



RAIN  
FINE GRAIN



RAIN  
TRAVERTINE



CELERY  
ACID ETCH



CELERY  
SANDBLAST



CELERY  
NATURAL SAND



CELERY  
FINE GRAIN



CELERY  
TRAVERTINE



MOSS  
ACID ETCH



MOSS  
SANDBLAST



MOSS  
NATURAL SAND



MOSS  
FINE GRAIN



MOSS  
TRAVERTINE

# GFRC - Lightweight Concrete



CAROB  
ACID ETCH



CAROB  
SANDBLAST



CAROB  
NATURAL SAND



CAROB  
FINE GRAIN



CAROB  
TRAVERTINE



CLAY  
ACID ETCH



CLAY  
SANDBLAST



CLAY  
NATURAL SAND



CLAY  
FINE GRAIN



CLAY  
TRAVERTINE



SANDBOX  
ACID ETCH



SANDBOX  
SANDBLAST



SANDBOX  
NATURAL SAND



SANDBOX  
FINE GRAIN



SANDBOX  
TRAVERTINE

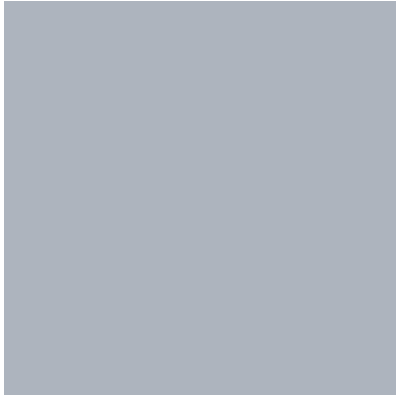


## Fiberglass - FRP

Our commercial-grade FRP planters are highly durable, last longer than plastic, and will endure in most winter climates. Our labor-intensive process results in a uniform, consistent quality product; a great lightweight choice for rooftop applications. FRP is available in 3 textures; Smooth, Rough Stucco, and Orange Peel.



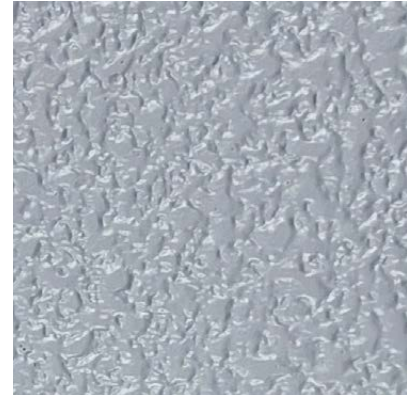
# FRP - Fiberglass



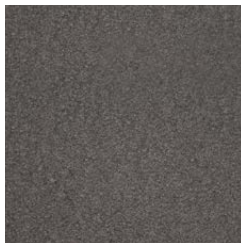
TEXTURE: SMOOTH  
*Shown in Shark*



TEXTURE: ROUGH STUCCO  
*Shown in Shark*



TEXTURE: ORANGE PEEL  
*Shown in Shark*



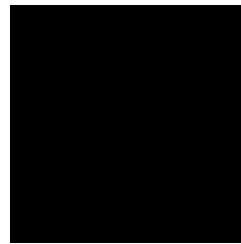
IRON  
SMOOTH



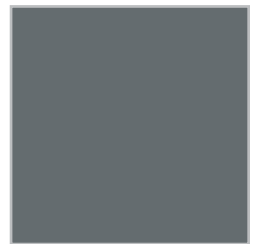
BRONZE  
SMOOTH



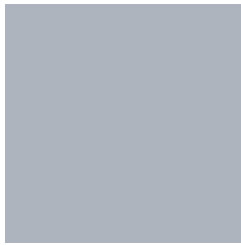
SILVER  
SMOOTH



PITCH  
SMOOTH



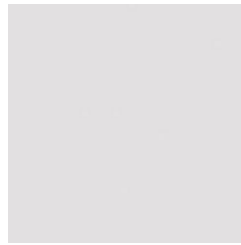
SHADOW  
SMOOTH



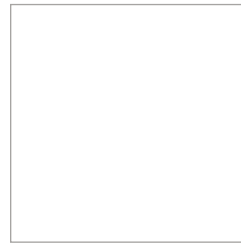
SHARK  
SMOOTH



PUDDLE  
SMOOTH



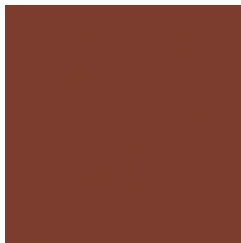
SMOKE  
SMOOTH



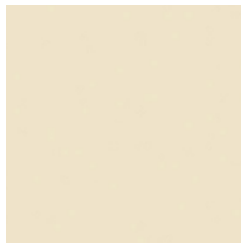
WHITE  
SMOOTH



CHOCOLATE  
SMOOTH



TERRA COTTA  
SMOOTH



REED  
SMOOTH



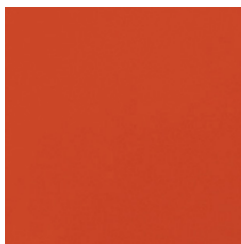
CITRON  
SMOOTH



CARIBBEAN  
SMOOTH



SAGE  
SMOOTH



TOMATO  
SMOOTH



ROYALTY  
SMOOTH

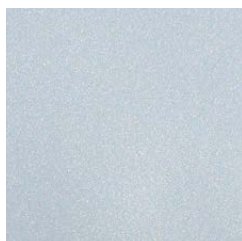
# Powder-Coat Finishes - Aluminum & Steel



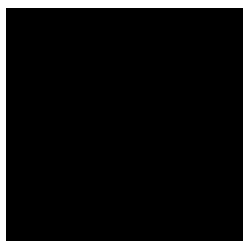
CEDAR BRONZE\*  
TIGER DRYLAC 49/61120



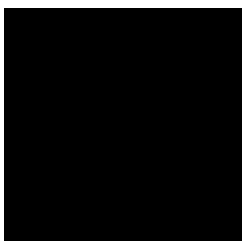
CHAMPAGNE\*  
TIGER DRYLAC 049/91558



SILVER\*  
TIGER DRYLAC 049/90500



PITCH SATIN\*  
CARDINAL T002-BK08



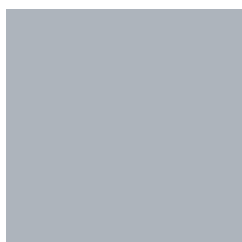
PITCH  
CARDINAL T009-BK12



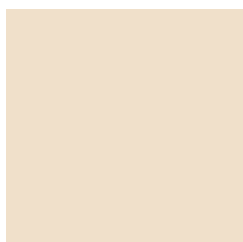
PUDDLE  
TIGER DRYLAC 138/70022  
RAL 7022



SHADOW  
TIGER DRYLAC 49/71180  
RAL 7012



SHARK  
TIGER DRYLAC 138/70038  
RAL 7038



WHEAT  
TIGER DRYLAC 49/11280  
RAL 1013



WHITE  
TIGER DRYLAC 138/10010  
RAL 9016



CHOCOLATE  
TIGER DRYLAC 49/66080  
RAL 8016



RUST TEXTURE\*  
CARDINAL T091-BR47



CHILI  
TIGER DRYLAC 49/31950  
RAL 3013



CORAL  
TIGER DRYLAC 49/24690  
RAL 2012



SUNFLOWER  
TIGER DRYLAC 49/22560  
RAL 1005



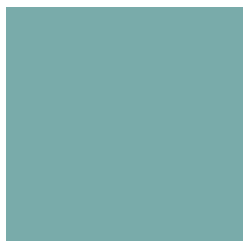
EGGPLANT  
TIGER DRYLAC 49/32540  
RAL 4007



SAPPHIRE  
TIGER DRYLAC 49/42230  
RAL 5003



BRILLIANT BLUE  
TIGER DRYLAC 49/42250  
RAL 5007



TEAL  
TIGER DRYLAC 138/50034  
RAL 6034



AEGEAN  
TIGER DRYLAC 49/44270  
RAL 5020



FOREST  
TIGER DRYLAC 49/50009  
RAL 6009



PINE  
TIGER DRYLAC 49/50002  
RAL 6005



FERN  
TIGER DRYLAC 49/52670  
RAL 6025



PISTACHIO  
TIGER DRYLAC 49/51000  
RAL 6019

\*Our standard Powder-Coat colors come in semi-gloss, except Pitch Satin, Rust Texture, and Metallic colors.

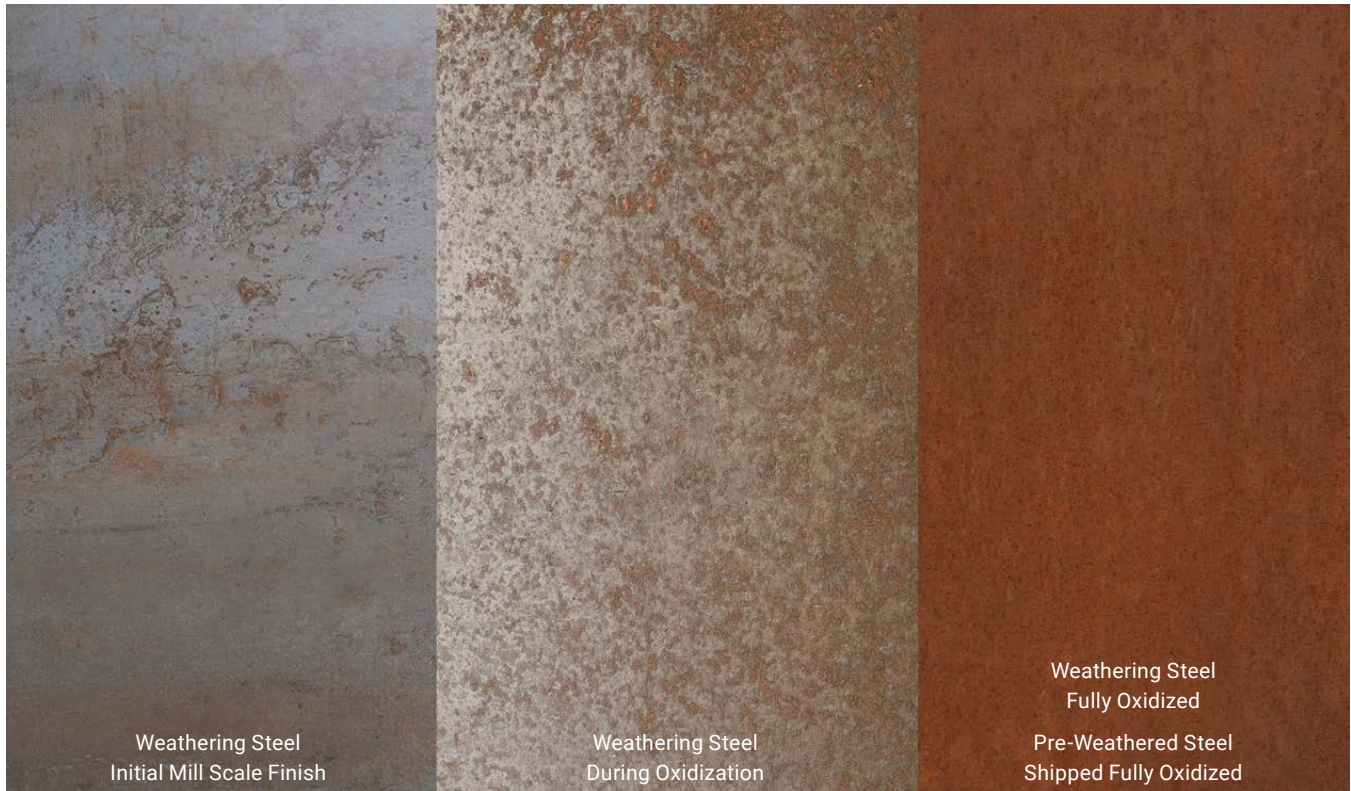
Note that Rust Texture looks brighter in direct sunlight. You can order a Powder-Coat Swatch Book with all colors, and we offer an individual sample of our Rust Texture. [tournesol.com/samples](https://tournesol.com/samples).



## Greenscreen<sup>®</sup> Trellis

Our rigid and lightweight three-dimensional trellis panels are fabricated from 14-gauge galvanized steel wire in accordance with ASTM A641. The wire is welded at intersections to form a 2" x 2" face grid on the front and back of each panel. Bent wire trusses are spaced at 2" centers and welded to the front and back of each

face grid at the truss apex, separating the two face grids and creating their 3" depth. Panels are made to order, customizable, and powder-coated. Panels can be installed horizontally or vertically, mounted to walls or between posts, as infill or overhead with steel supports



# Weathering Steel

Weathering Steel planters offer a warm industrial aesthetic favored by many landscape architects. The natural red-orange oxidization forms a protective patina that develops and regenerates continuously. Our A588 and A606 grade steel planters are meticulously assembled and welded, and come with stainless steel bases to extend their lifespan.

## Weathering Steel

Our Weathering Steel ships with a natural mill scale finish. The initial oxidation develops within weeks and evolves over time. Environmental conditions such as humidity, salt, and the temperature at installation can affect rust uniformity and formation rate. The color develops from a vibrant orange to a deep reddish-brown.

## Pre-Weathered Steel

Our Pre-Weathered Steel finishing treatment process helps to accelerate the natural weathering look of steel. Pre-Weathered Steel products undergo an earth-friendly

pre-treatment, which steps up the oxidation process timeline to help achieve the desired visual result faster.

Our process begins by grit-blasting the raw mill scale surface; next we treat it with an all-natural solution of hydrogen peroxide, vinegar, and salt. Treated products cure for a day before being individually wrapped in paper and then plastic before shipping.

Raw mill scale steel and treated surfaces can be powdery and may show markings during delivery and installation. These changes are affected by humidity levels and storage.

Weathering Steel products should be unwrapped upon arrival and stored indoors if possible. Shedding during unpacking and storing may occur; protect flooring during storage and installation.



## Thermally Modified Hardwood

Our thermally modified wood is manufactured from hardwoods harvested in the Northeast, typically Oak. The wood is thermally processed in a kiln, producing a deep, rich color. Color and grain vary.

Like all natural wood products, thermally modified wood will turn silver/gray once exposed to UV sunlight.

For more info: [tournesol.com/fabrication-and-materials](https://tournesol.com/fabrication-and-materials)



## Red Cedar

A softwood tree, highly valued for its resistance to decay and insects, durability, and attractive reddish-brown color. The wood is lightweight yet solid and stable, with a straight, uniform grain and a fine, even texture. Red Cedar has a pleasant, distinctive aroma due to the natural oils that help protect it from decay and insects.



## Douglas Fir

A coniferous, softwood tree commonly found in western North America, Douglas Fir is a strong and dense wood with a high stiffness-to-weight ratio. It has a straight grain and a moderately coarse texture with a reddish-brown color. Highly resistant to decay and insect damage, its properties present strength, durability, and versatility for outdoor applications.



## Ipe

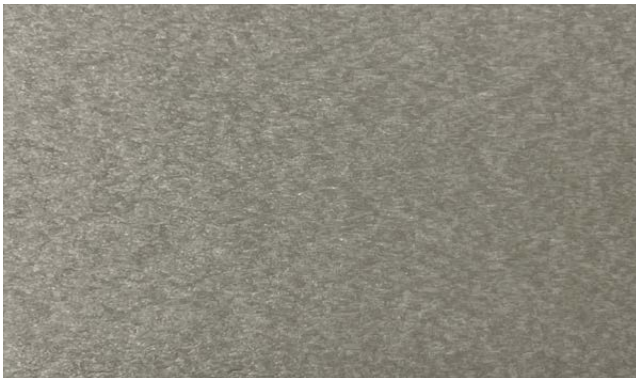
A hardwood native to Central and South America, Ipe is highly valued for its resistance to moisture, insects, and decay; its extreme durability includes resistance to dents and scratches. Ipe has a dense, tight grain with a rich, dark brown color. The wood is very hard and heavy, with natural oils that help it remain durable and protected in inclement weather, fungal decay, and water damage.



CEDAR



DARK BROWN



GRAY



WEATHERED WOOD

## Recycled Plastic Lumber

Our recycled plastic lumber is a milk-bottle based, recycled plastic lumber which maintains its structure and durability.

This recycled plastic lumber is 90% recyclable, and 90% is post-consumer content and reduces the demand for virgin plastic or wood.

Utilizing recycled plastic lumber helps divert plastics from landfills, reducing environmental pollution and promoting waste management.

**Reduction of Environmental Impact:** Choosing recycled plastic lumber for park furniture and other applications helps minimize environmental damage by avoiding the depletion of natural resources and reducing energy consumption.

**Durability and Longevity:** Recycled plastic lumber is resistant to cracking, splitting, and rot, which enhances its lifespan compared to traditional wood materials, reducing the need for frequent replacements and conserving resources in the long term.